



Steve VanNoord
Matthew VanNoord
616-698-8930
Fax: 616-554-3646

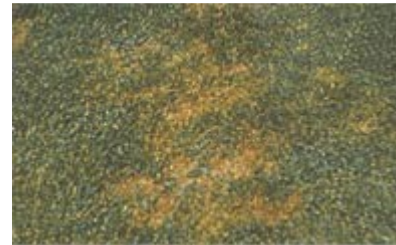
8824 Eastern Ave, Byron Center MI 49315

www.WeedandFeedLawnCare.com

Leaf Spot

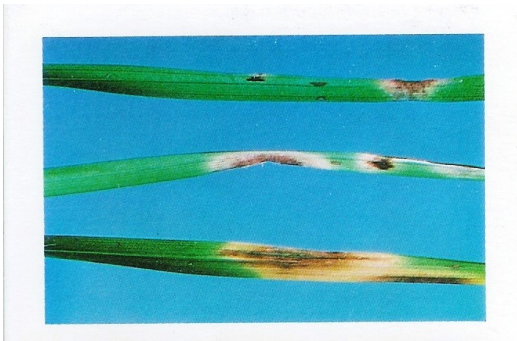
DESCRIPTION OF DISEASE

Leaf spot occurs in warm weather and is easily recognized. Spots on the leaves develop purplish-red to purplish-brown borders and brown to tan centers. The spots may be as wide as the leaf and somewhat longer than wide. Leaf spots may damage the leaf tips. However, the fungus, in rare cases, can also attack the crown and basal parts of the plants. Sometimes plants are infected in large, irregular patches several inches up to many feet in size. This may produce an irregular patchwork across an entire lawn.



SUSCEPTIBLE TURFGRASSES

Grass varieties differ greatly in susceptibility; but many new varieties are resistant to leaf spot. Kentucky Bluegrass, ryegrass, bentgrass and fescue are the most susceptible.



CONDITIONS FAVORING DISEASE

Leaf spot occurs over a wide range of temperature conditions (50 to 90 degrees F) and usually under high humidity. Leaf spot generally appears first on grasses in shaded areas and is most severe and damaging on grass mowed less than 3 inches.

MANAGEMENT

- When mowing, cut high, three inches or above.
- Fertilize grass of susceptible lawns.
- Aerate to reduce thatch and provide a better growing environment.
- Watering should be deep, thorough, and no more often than needed. You want grass blades to dry quickly.